

BIO-BALLAST® IS AN ENVIRONMENTALLY SAFE SUBSTITUTE FOR CALCIUM CHLORIDE

BIO-BALLAST® IS COMPLETELY BIODEGRADABLE

BIO-BALLAST® IS SAFE TO USE AROUND HUMANS, ANIMALS AND PLANTS

BIO-BALLAST® IS NON-FLAMMABLE AND WATER SOLUBLE

BIO-BALLAST® IS SAFE TO USE IN TUBELESS TIRES

BIO-BALLAST® IS FORMULATED TO COAT THE INSIDE OF THE TIRE AND WHEELS

BIO-BALLAST® PREVENTS RIM FAILURE DUE TO RUST AND OXIDATION

BIO-BALLAST® KEEPS THE INNER LINER OF THE TIRE SOFT AND PLIABLE

BIO-BALLAST® IS SLUSH FREE DOWN TO -30°F

FOR MORE INFORMATION:

CONTACT THE TIRE DEALER IN YOUR AREA

AVAILABLE FROM:

**GLOBAL PREVENTIVE SOLUTIONS, LLC
855-567-8378**

**ROBERT@GLOBALPREVENTIVESOLUTIONS.COM
WWW.GLOBALPREVENTIVESOLUTIONS.COM**

Bio-Ballast®

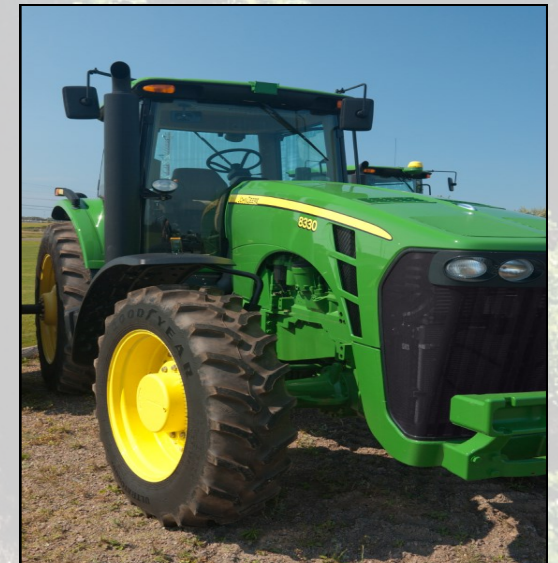
FROM

Global Preventive Solutions LLC

NON-CORROSIVE

BIODEGRADABLE

NON-TOXIC





LIQUID BALLASTING IN TIRES HAS BEEN AN ALTERNATIVE TO CAST IRON WEIGHTS FOR MANY YEARS.

IT IS TRADITIONALLY LESS EXPENSIVE AND EASIER TO MANIPULATE IN TERMS OF GETTING THE PROPER BALANCE FOR EACH MACHINE AND ITS SPECIFIC USE.

BIO-BALLAST BRINGS ALL THE ADVANTAGES OF CALCIUM CHLORIDE AS A LIQUID BALLAST AND THEN SOME:

- ◆ NON-TOXIC, WILL NOT HARM PLANTS OR ANIMALS.
- ◆ USES A BY-PRODUCT OF THE BIO-FUEL INDUSTRY THAT ENHANCES RECYCLING.
- ◆ NON-CORROSIVE AND INHIBITS RUST.



TIRE BALLAST WILL INCREASE TRACTION, PULLING POWER AND STABILITY ON ANY OFF ROAD MACHINE.



**FINALLY!
AN ENVIRONMENTALLY
ACCEPTED REPLACEMENT
FOR CALCIUM
CHLORIDE.**



**UNLIKE ANY OTHER
LIQUID TIRE BALLAST.**



**SAMPLE FILL RATES
AT 75% FILL**

Tire Size	Liquid (gallons)	Weight of Bio-Ballast (in pounds)
320/85R24 (12.4R24)	30	291
340/85R24 (13.6R24)	37	359
380/85R24 (14.9R24)	47	456
380/85R28 (14.9R28)	57	553
420/85R28 (16.9R28)	76	737
380/85R30 (14.9R30)	61	592
480/80R30 (18.4R30)	91	883
380/85R34 (14.9R34)	66	640
480/70R34	87	844
480/80R38 (18.4R38)	116	1,125
520/85R38 (20.8R38)	151	1,465
710/70R38 (IF710/70R38)	230	2,231
800/70R38	299	2,900
480/80R42 (18.4R42)	126	1,222
520/85R42 (20.8R42)	160	1,552
710/70R42 (IF710/70R42)	247	2,396
480/80R46 (18.4R46)	132	1,280
520/85R46 (IF520/85R46)	162	1,571
480/80R50 (IF480/80R50)	133	1,290

